

Delock USB 2.0 to 2 x serial RS-232 adapter

Description

This EASY-USB Type-A to serial adapter by Delock provides two RS-232 DB9 interfaces for printers, measuring instruments, controllers, IoT devices etc.



ca. 60 cm

Specification

- Connectors:
 - 1 x EASY-USB 2.0 Type-A male >
 - 2 x serial RS-232 DB9 male with nuts
- Chipset: ASIX MCS7820
- Databits: 5, 6, 7, 8
- Stop bits: 1, 2
- FIFO: 512 Byte buffer bi-directional
- Parity: even, odd, none, mark, space
- Flow control: none, hardware RTS / CTS, software XON / XOFF
- Signals: TxD, RxD, RTS, CTS, DTR, DSR, DCD, RI, GND
- Data transfer rate up to 460.8 Kb/s
- Supports: UHCI / OHCI / EHCI
- Serial connector with nuts
- Supports remote wake-up and power management
- Compatible with 16C450 / 16C550 UART
- 1 x ferrite core
- Length incl. connectors (L): ca. 0.6 m

System requirements

- Linux Kernel 2.6 or above
- Windows 7/7-64/8.1/8.1-64/10/10-64
- PC or laptop with a free USB Type-A port

Package content

- EASY-USB 2.0 to 2 x serial adapter
- Driver CD
- User manual

Item no. 63950

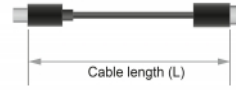
EAN: 4043619639502

Country of origin: China

Package: Retail Box



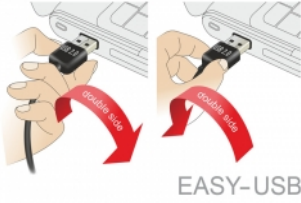
Images



EASY-USB

PCB with both sided contacts

contacts



General

| | |
|-----------------------------|---|
| Function: | Plug & Play Remote Wake-Up IrDA 115K Baud Custom Baud Enable |
| Specification: | RS-232 (EIA / TIA) USB 2.0 |
| Supported operating system: | Windows 7 32-bit Windows 7 64-bit Windows 8.1 32-bit Windows 8.1 64-bit Windows 10 32-bit Windows 10 64-bit ex Linux Kernel 2.6.x |

Interface

| | |
|--------------|----------------------------|
| Connector 1: | 1 x Easy USB Type-A |
| Connector 2: | 2 x Serial RS-232 DB9 male |

Technical characteristics

| | |
|---------------------|-----------------------------|
| Chipset: | ASIX MCS7820 |
| Data transfer rate: | 2 x 460.8 Kbps |
| FIFO: | 512 Byte |
| Data transmission: | asynchronous full duplex |

Physical characteristics

| | |
|-------------------------------|-----------|
| Connector color: | black |
| Housing material: | Plastic |
| Cable colour: | black |
| Cable length incl. connector: | ca. 60 cm |
| Screw type: | #4-40 UNC |